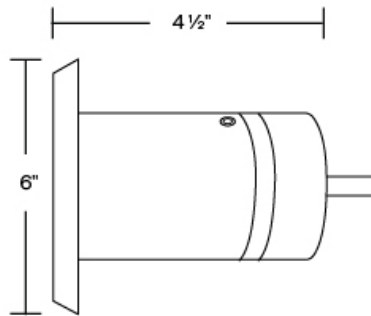
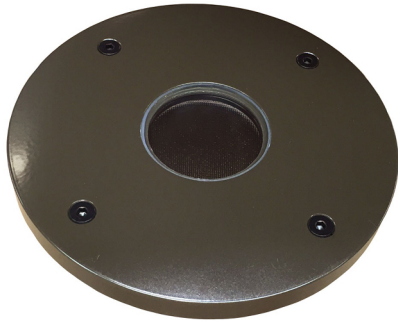




IN-20

12V MR16 35W, 8W LED In Ground Light

10 YEAR
WARRANTY
ALUMINUM



- Machined 6061-T6 copper-free aluminum. Aluminum components are black anodized, then a polyester powder coat finish is applied.
- Tempered glass lens.
- 3/8" thick.
- 6 feet of 16/2 low voltage cable supplied.
- Suitable for drive-over installations.
- Maximum Wattage: 35 watt, 8 watt LED
- Input Voltage: 12V (remote transformer required)
- Socket: GY-6.35 Bi Pin Porcelain
- IP Rating: 67
- Specification-grade direct burial landscape lighting, wet-location luminaire for up lighting applications.

IN-20 Shown in Bronze Powder Coat Finish (BZ)
Knuckle: Tapered & Positive Locking

Dimensions: 6" dia. x 5 3/8" overall

①	②	③
PRODUCT	MATERIAL	FINISH
IN-20	A	

Sample Part Number: **IN-20-A-BK**

1	PRODUCT	2	MATERIAL	3	FINISH
	IN-20		A 6061 - T6 Aluminum		<div><div>BG</div>Beige</div> <div><div>BK</div>Black</div> <div><div>BKT</div>Black Texture</div> <div><div>BZ</div>Bronze</div> <div><div>BZT</div>Bronze Texture</div> <div><div>SL</div>Silver</div> <div><div>WH</div>White</div>

10 year warranty for Aluminum | Warranty only valid with QTL power supplies | Field modifications void warranty | Data subject to change, all data has +/- 5% tolerance

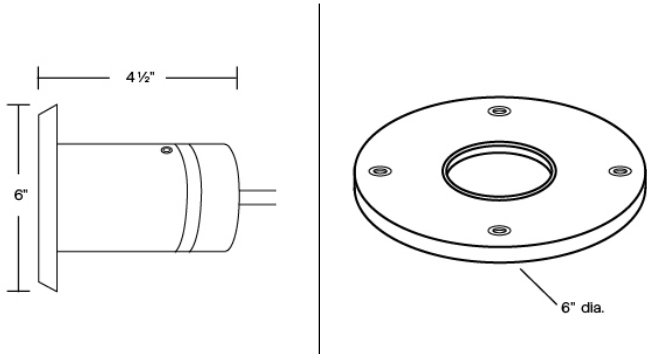


IN-20

12V MR16 35W, 8W LED In Ground Light

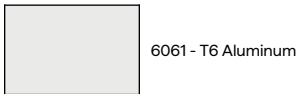
1

PRODUCT - DIMENSIONS



2

MATERIAL



3

FINISH

Standard TGIC powder coat finishes



ACCESSORIES - COLOR FILTERS

Holds up to three accessories. Wire Filter Holder is included for each color filter to hold filter in place.

BL	LB	PK	AM	MV	RD	GR	DA
Blue Glass Filter	Light Blue Glass Filter	Pink Glass Filter	Amber Glass Filter	Mercury Vapor Glass Filter	Red Glass Filter	Green Glass Filter	Dichroic Amber Glass Filter
To order separately use AY-2-MR16-BL	To order separately use AY-2-MR16-LB	To order separately use AY-2-MR16-PK	To order separately use AY-2-MR16-AM	To order separately use AY-2-MR16-MV	To order separately use AY-2-MR16-RD	To order separately use AY-2-MR-16GR	To order separately use AY-2-MR16-DA



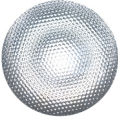





IN-20

12V MR16 35W, 8W LED In Ground Light

ACCESSORIES - LENS

Holds up to three accessories

<p>SP</p>  <p>Spread Lens</p> <p>To order separately use AY-1-MR16-1</p>	<p>LI</p>  <p>Linear Lens</p> <p>To order separately use AY-1-MR16-2</p>	<p>SO</p>  <p>Softening Lens</p> <p>To order separately use AY-1-MR16-3</p>	<p>LV</p>  <p>Louver Lens</p> <p>To order separately use AY-1-MR16-4</p>	<p>WI</p>  <p>Wire Holder</p> <p>To order separately use AY-1-MR16-5</p>	<p>FR</p>  <p>Frosted Lens</p> <p>To order separately use AY-1-MR16-6</p>
---	---	--	---	---	--

LAMPS

MR16 Halogen or LED; GY-6.35 Bi-Pin Porcelain
Maximum wattage: 35 Watt, 8 Watt LED

<p>MR16</p>  <p>SORAA</p>	<p>MR16</p>  <p>DAUER</p>	<p>MR16</p>  <p>BRILLIANCE</p>	<p>MR16</p>  <p>EMERY ALLEN</p>
--	--	---	--

COMPATIBLE POWER SUPPLIES

See power supplies cut sheets for more information. Data subject to change, all data has +/- 5% tolerance.

DIMMING PROTOCOL	OUTDOOR
	LANDSCAPE LIGHTING
Phase	Q-HEX Q-SET-1 Q-SET-2 Q-SET-3 QOMD QOMS