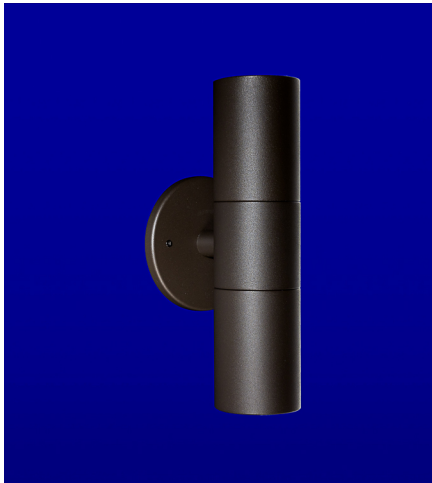


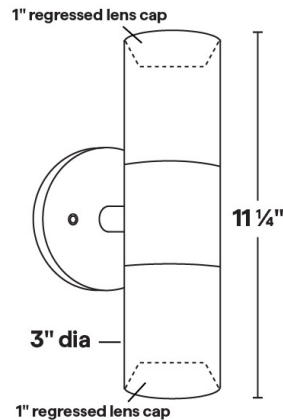


WA-39

120V GU10 35W Halogen/8W LED Dual Wall Mount



WA-39 Shown in Bronze Texture Powder Coat Finish (BZT)



Dimensions: 3" dia. x 11 1/4"

- Two 1" regressed lens caps; holds up to two accessories
- 6061 Marine Grade Aluminum components are black anodized, then a polyester powder coat finish is applied.
- Stainless steel hardware.
- Junction box mount design.
- 10" 18ga. Teflon coated wire leads.
- Clear tempered glass lens, glued in.
- High-temperature silicone O-ring seal used to seal the cap against the body.
- Maximum Wattage: 35W Halogen(x2)/8W LED(x2)
- Input Voltage: 120V
- Socket: GU10 Porcelain
- Wet Listed
- Specification-grade, wet-location landscape luminaire for wall mounted fixed downlighting and uplighting applications.

| 1 | 2 | 3 | 4 |
|---------|----------|----------------|--------|
| PRODUCT | MATERIAL | MOUNTING PLATE | FINISH |
| WA-39 | A | | |

Sample Part Number: **WA-39-A-1-BK**

| 1 | 2 | 3 | 4 |
|---------|------------|---|--|
| PRODUCT | MATERIAL | MOUNTING PLATE | FINISH |
| WA-39 | A Aluminum | 1 4/0 Round Mounting Plate 2 4/0 Square Mounting Plate 3 3/0 Round Mounting Plate | BG Beige BB Black Bronze BK Black BKT Black Texture BZ Bronze BZT Bronze Texture SL Silver WH White |

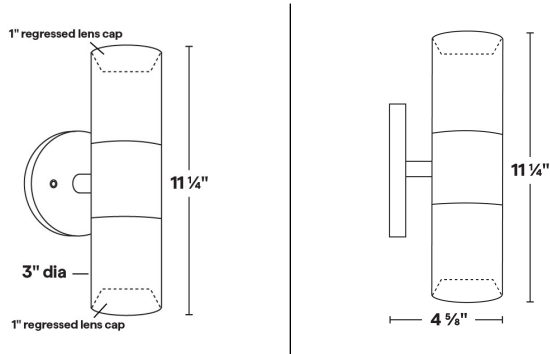
5 year warranty | Warranty only valid with QTL power supplies | Field modifications void warranty | Data subject to change, all data has +/- 5% tolerance



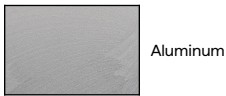
WA-39

120V GU10 35W Halogen/8W LED Dual Wall Mount

1 PRODUCT - DIMENSIONS



2 MATERIAL



3 MOUNTING PLATE

Three mounting plate options



4 FINISH

Eight Standard TGIC Free powder coat finishes







WA-39
120V GU10 35W Halogen/8W LED Dual Wall Mount

LAMPS

MR16 Halogen or LED; GU10 Porcelain
Maximum wattage: 35W Halogen(x2)/8W LED(x2)

| GU10 | GU10 |
|---|---|
|  |  |
| EMERY ALLEN 7.0W | EMERY ALLEN 3.0W AMBER |