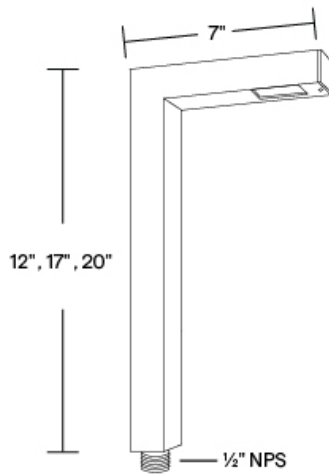
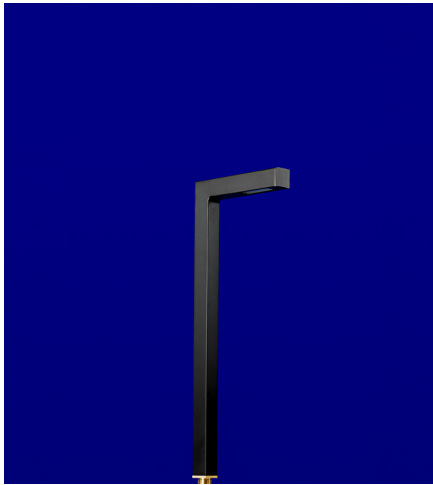




# PL-10

12V T4 35W, 2.5W LED Path Light



- Bronze and Brass.
- Stainless steel hardware.
- 6' of 18/2 low voltage cable supplied.
- Frosted tempered glass lens, glued in.
- High-temperature silicone O-ring seals are used to seal the cap against the body.
- Input Voltage: 12V (remote transformer required)
- Socket: GY 6.35 Bi-Pin Porcelain
- Wet Listed
- Specification-grade, wet-location landscape luminaire for path or garden lighting applications.

PL-10 Shown in Dark Bronze Finish (DB)

Overall Dimensions: 1"x 1" tube, 20" H x 7" L

1	2	3	4
PRODUCT	MATERIAL	STEM HEIGHT	FINISH
PL-10	B		

Sample Part Number: **PL-10-B-20-DB**

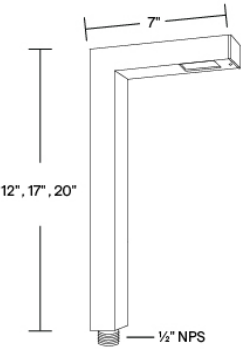
1	2	3	4
PRODUCT	MATERIAL	STEM HEIGHT	FINISH
PL-10	B Brass	12 12" Height 17 17" Height 20 20" Height	BG Beige BB Black Bronze BK Black BKT Black Texture BZ Bronze BZT Bronze Texture SL Silver WH White DB Dark Bronze NT Natural

5 year warranty | Warranty only valid with QTL power supplies | Field modifications void warranty | Data subject to change, all data has +/- 5% tolerance



**PL-10**  
12V T4 35W, 2.5W LED Path Light

**1 PRODUCT - DIMENSIONS**



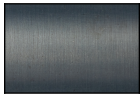
**2 MATERIAL**



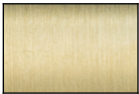
Brass

**4 FINISH**

Eight Standard TGIC powder coat finishes and Two natural finish available



Dark Bronze



Natural

**ACCESSORIES - MOUNTING**

1/2" NPS; Mount options must be order separately

MT-45



Ground Stake

MT-6



Stainless Steel  
Ground Spike

MT-7



Stainless Steel  
Ground Spike

MT-8



Stainless Steel  
Ground Spike



PL-10

12V T4 35W, 2.5W LED Path Light

LAMPS

G4 Halogen or LED; GY-6.35 Bi Pin Porcelain (accepts G4 Lamps)  
Maximum wattage: 35 watt, 2.5 watt LED

G4



EMERY ALLEN  
1.5W

COMPATIBLE POWER SUPPLIES

See power supplies cut sheets for more information. Data subject to change, all data has +/- 5% tolerance.

DIMMING PROTOCOL	OUTDOOR
	LANDSCAPE LIGHTING
Phase	Q-HEX Q-SET-1 Q-SET-2 Q-SET-3 QOMD QOMS