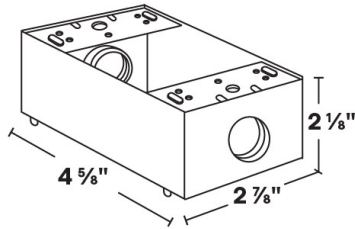
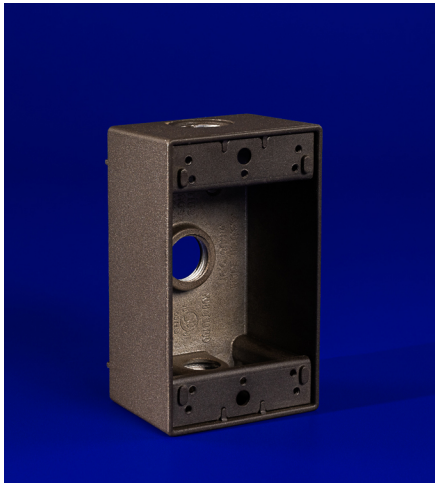




MT-30

Single Gang Junction Box



- 6061 Marine Grade Aluminum box construction for junction mount installations.
- Three 1/2" NPS mount threads, accepts industry standard conduit connections.

MT-30 is shown in Bronze Texture Powder Coat Finish (BZT)

Dimensions: 4 5/8" x 2 7/8"; 2 1/8" deep

1	2
PRODUCT	FINISH
MT-30	

Sample Part Number: MT-30-WT

1	2
PRODUCT	FINISH
MT-30	<div>BG Beige</div> <div>BB Black Bronze</div> <div>BK Black</div> <div>BKT Black Texture</div> <div>BZ Bronze</div> <div>BZT Bronze Texture</div> <div>SL Silver</div> <div>WH White</div>

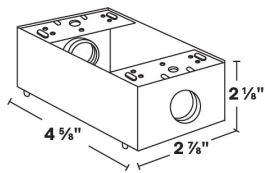
5 year warranty | Field modifications void warranty | Data subject to change, all data has +/- 5% tolerance



MT-30

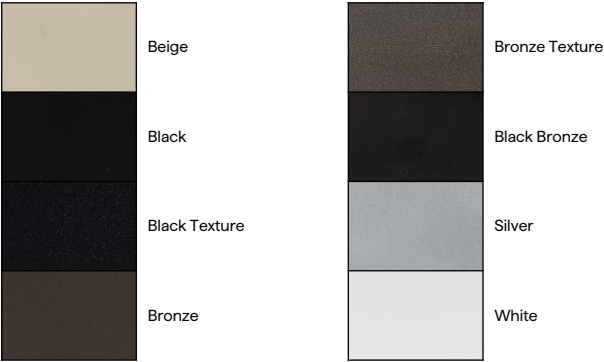
Single Gang Junction Box

1 PRODUCT - DIMENSIONS



2 FINISH

Eight Standard TGIC Free powder coat finishes



JUNCTION BOX COVERS

