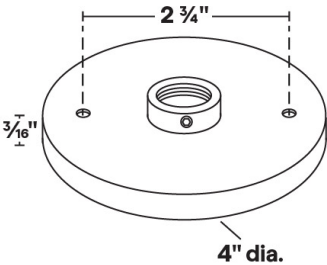
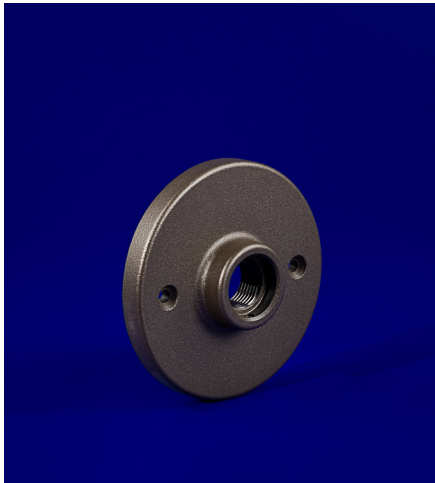




MT-41

3/0 Junction Box Cover - Locking



- 6061 Marine Grade Aluminum construction.
- 1/2" NPS mount threads, accepts industry standard luminaires.
- 10-32 set screw provides positive locking.
- 3/0 junction box cover with locking feature. Utilized for junction mount installations.

MT-41 Shown in Bronze Texture Powder Coat Finish (BZT)

Dimensions: 4" dia. x 3/16"

| 1 | 2 | 3 |
|---------|----------|--------|
| PRODUCT | MATERIAL | FINISH |
| MT-41 | A | |

Sample Part Number: MT-41-A-WT

| 1 | 2 | 3 |
|---------|------------|---|
| PRODUCT | MATERIAL | FINISH |
| MT-41 | A Aluminum | <div><div>BG</div><div>BB</div><div>BK</div><div>BKT</div><div>BZ</div><div>BZT</div><div>SL</div><div>WH</div><div>Beige</div><div>Black Bronze</div><div>Black</div><div>Black Texture</div><div>Bronze</div><div>Bronze Texture</div><div>Silver</div><div>White</div></div> |

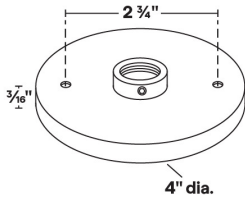
5 year warranty | Field modifications void warranty | Data subject to change, all data has +/- 5% tolerance



MT-41

3/0 Junction Box Cover - Locking

1 PRODUCT - DIMENSIONS



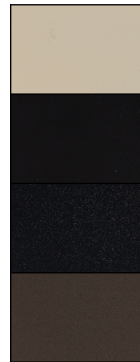
2 MATERIAL



Aluminum

3 FINISH

Eight Standard TGIC Free powder coat finishes



Beige

Black

Black Texture

Bronze



Bronze Texture

Black Bronze

Silver

White