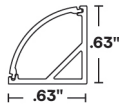
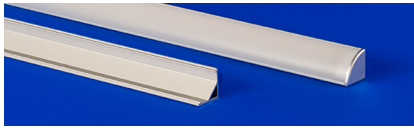




# LC-45

Field Assembled Extrusion - Corner & Surface



- A 45° angled LED extrusion with a curved lens
- Offered in a sleek flat profile with two lens options.
- Produces a wide 130° beam angle perfect for cove, under cabinet and millwork applications.
- Perfect for applications when the light needs to be flush in a corner.
- Compatible with all LC Strips.

1	2	3	4	5	6
PRODUCT	FINISH	MOUNTING	LENS	WIRE INPUT/OUTPUT	EXTRUSION LENGTH (IN)
LC-45		SST		NI	

Sample Part Number: LC-45-ST-SST-DF-NI-48"

<div>1</div> <div>PRODUCT</div> <div>LC-45</div>	<div>2</div> <div>FINISH</div> <div>ST     Satin</div> <div>BK     Black</div>	<div>3</div> <div>MOUNTING</div> <div>SST     Stainless Steel</div> <div>Refer to following pages for mounting clip option details and provided quantities.</div>
<div>4</div> <div>LENS</div> <div>DF     Diffused</div> <div>FR     Frosted</div> <div>For representation of LED visibility, see Diode Visibility section on following pages.</div> <div>For beam angles, see Photometric Performance section on following pages.</div>	<div>5</div> <div>WIRE INPUT/OUTPUT</div> <div>NI     Not Installed</div>	<div>6</div> <div>EXTRUSION LENGTH (IN)</div> <div>1" increments from 1" - 98.43"</div> <div>Tolerance +0.0"/-0.5"</div>

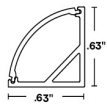
Field modifications must comply with QTL's installation methods otherwise warranty is null & void | Corner/surface mount



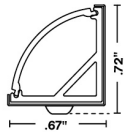
# LC-45

Field Assembled Extrusion - Corner & Surface

## 1 PRODUCT - DIMENSIONS



Profile

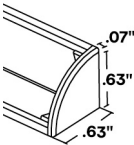


Profile with stainless steel mounting clip

## END CAPS

One pair of end caps is provided with each length of extrusion ordered.

Flat end caps



No feed

To order separately, use LC-45-EC

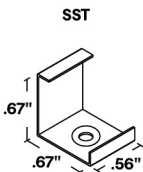
## 2 FINISH



Satin

Black

## 3 MOUNTING



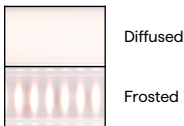
Stainless Steel Clip

2 clips provided for 4' or less; 4 clips provided for greater than 4'

To order separately use SST-16

Each clip comes with a #4 x 5/8" Flat Head SS

## 4 DIODE VISIBILITY



Diffused

Frosted

## COMPATIBLE ACCESSORIES

HINGE - HMB-M	HINGE - HMB-L	HINGE - HMB-XL	Q-PIVOT	Q-ANGLE	QUOVA-STANDARD	VHB
Adjustable mounting bracket - Medium	Adjustable mounting bracket - Large	Adjustable mounting bracket - XLarge	Small mounting accessory	Adjustable mounting accessory	QUOVA Knife Edge	Double sided mounting tape