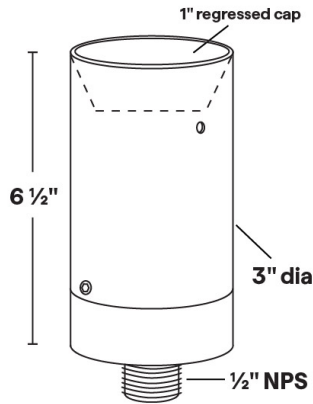




UL-29
120VAC PAR20 35W Halogen/11W LED Up
Light



UL-29 Shown in Bronze Texture Powder Coat
Finish (BZT)



Dimensions: 3" dia. x 6 1/2"

- 1" regressed lens cap; holds up to two accessories
- 6061 Marine Grade Aluminum components are anodized, then a polyester powder coat finish is applied.
- Stainless steel hardware.
- 10" of 18ga. Teflon coated wire leads.
- Tempered clear glass lens.
- High-temperature silicone O-ring seal used to seal the cap against the body.
- Maximum Wattage: 35W Halogen/11W LED
- Input Voltage: 120VAC
- Socket: Medium base ceramic
- Wet Listed
- Specification-grade, wet-location landscape luminaire for fixed uplighting applications. Can be utilized for ground mounted or surface mounted installations.

1	2	3
PRODUCT	MATERIAL	FINISH
UL-29	A	

Sample Part Number: UL-29-A-BK

1	2	3
PRODUCT	MATERIAL	FINISH
UL-29	A Aluminum	<div><div>BG</div><div>BB</div><div>BK</div><div>BKT</div><div>BZ</div><div>BZT</div><div>SL</div><div>WH</div><div>Beige</div><div>Black Bronze</div><div>Black</div><div>Black Texture</div><div>Bronze</div><div>Bronze Texture</div><div>Silver</div><div>White</div></div>

5 year warranty | Warranty only valid with QTL power supplies | Field modifications void warranty | Data subject to change, all data has +/- 5% tolerance

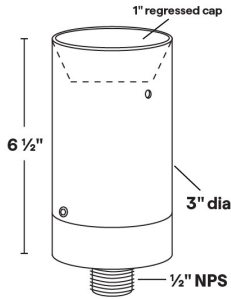


UL-29

120VAC PAR20 35W Halogen/11W LED Up Light

1

PRODUCT - DIMENSIONS



2

MATERIAL

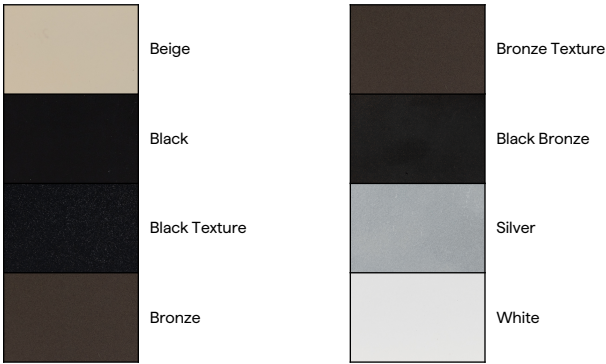


Aluminum

3



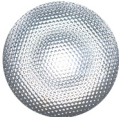



FINISH

Eight Standard TGIC Free powder coat finishes available



ACCESSORIES - LENS

Holds up to two accessories

<div>SP</div>  <div>Spread Lens</div> <div>To order separately use AY-1-PAR20-1</div>	<div>LI</div>  <div>Linear Lens</div> <div>To order separately use AY-1-PAR20-2</div>	<div>SO</div>  <div>Softening Lens</div> <div>To order separately use AY-1-PAR20-3</div>	<div>LV</div>  <div>Louver Lens</div> <div>To order separately use AY-1-PAR20-4</div>	<div>WI</div>  <div>Wire Holder</div> <div>To order separately use AY-1-PAR20-5</div>	<div>FR</div>  <div>Frosted Lens</div> <div>To order separately use AY-1-PAR20-6</div>
--	--	---	--	--	---



UL-29

120VAC PAR20 35W Halogen/11W LED Up Light

ACCESSORIES - MOUNTING

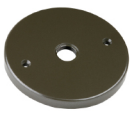
1/2" NPS; Mount options must be ordered separately

MT-44



4/0 Machined
Junction Box/Cover

MT-25



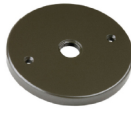
Round 4/0 Junction
Box Cover

MT-26



Square 4/0 Junction
Box Cover

MT-27



Round 3/0 Junction
Box Cover

LAMPS

PAR20 Halogen or LED; Medium base ceramic
Maximum wattage: 35W Halogen/11W LED

PAR20



SORAA VIVID
11.0W

PAR20



SORAA BRILLIANT
8.5W, 11.0W