

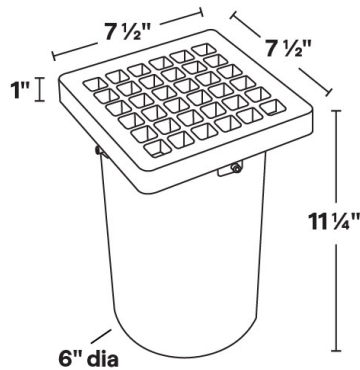
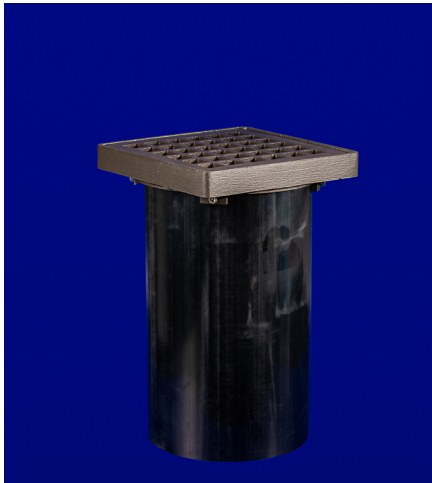


IN-4L

12VAC/DC MR16 9W LED In-Ground Well Light



5 YEAR WARRANTY



- Bronze frame and grate.
- Not compatible with electronic transformers.
- 10 degrees of aiming adjustment.
- Aluminum lamp holder.
- Tempered glass lens.
- 6 feet of 16/2 low voltage cable supplied.
- Input Voltage: 12VAC/DC (remote magnetic transformer required)
- Socket: GU5.3 Bi Pin Porcelain
- Wet Listed
- Specification-grade, wet-location direct burial landscape luminaire for uplighting applications.

IN-4L Shown in Bronze Texture Powder Coat Finish (BZT)

Dimensions: 7 1/2 " square x 11 1/4"

| 1 | 2 | 3 | 4 | 5 | 6 | 7 |
|---------|----------|-----------------|--------|---------|-----|------|
| PRODUCT | MATERIAL | FIXTURE REGRESS | FINISH | WATTAGE | CCT | LENS |
| IN-4L | B | | | 9.0 | | |

Sample Part Number: IN-4L-B-1-NT-9.0-30-30

| 1 | 2 | 3 | 4 | 5 |
|---------|----------|---|--|----------|
| PRODUCT | MATERIAL | FIXTURE REGRESS | FINISH | WATTAGE |
| IN-4L | B Bronze | 1 1 3/4" Regress 2 3" Regress (standard) | BG Beige BB Black Bronze BK Black BKT Black Texture BZ Bronze BZT Bronze Texture SL Silver WH White DB Dark Bronze NT Natural | 9.0 9.0W |

| 6 | 7 |
|----------------------------------|--|
| CCT | LENS |
| 27 2700K 30 3000K 40 4000K | 15 15 Degree Lens 30 30 Degree Lens 45 45 Degree Lens 60 60 Degree Lens |

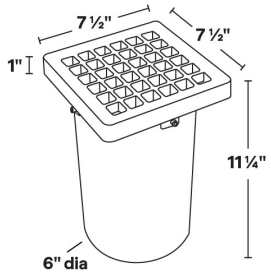
5 year warranty | Warranty only valid with QTL power supplies | Field modifications void warranty | Data subject to change, all data has +/- 5% tolerance



IN-4L

12VAC/DC MR16 9W LED In-Ground Well Light

1 PRODUCT - DIMENSIONS



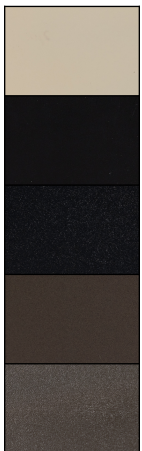
2 MATERIAL



Bronze

4 FINISH

Eight Standard TGIC Free powder coat finish.



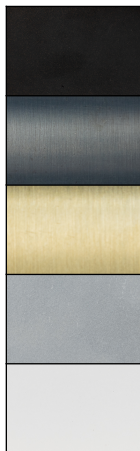
Beige

Black

Black Texture

Bronze

Bronze Texture



Black Bronze

Dark Bronze

Natural

Silver

White



IN-4L

12VAC/DC MR16 9W LED In-Ground Well Light

ACCESSORIES - COLOR FILTERS

Holds up to two accessories Wire Filter Holder is included for each color filter to hold filter in place.

| | | | | | | | |
|--|--|--|---|---|---|---|--|
| BL  Blue Glass Filter To order separately use AY-2-MR16-BL | LB  Light Blue Glass Filter To order separately use AY-2-MR16-LB | PK  Pink Glass Filter To order separately use AY-2-MR16-PK | AM  Amber Glass Filter To order separately use AY-2-MR16-AM | MV  Mercury Vapor Glass Filter To order separately use AY-2-MR16-MV | RD  Red Glass Filter To order separately use AY-2-MR16-RD | GR  Green Glass Filter To order separately use AY-2-MR16-GR | DA  Dichroic Amber Glass Filter To order separately use AY-2-MR16-DA |
|--|--|--|---|---|---|---|--|

ACCESSORIES - LENS

Holds up to two accessories

| | | | | | |
|---|---|--|---|---|--|
| SP  Spread Lens To order separately use AY-1-MR16-1 | LI  Linear Lens To order separately use AY-1-MR16-2 | SO  Softening Lens To order separately use AY-1-MR16-3 | LV  Louver Lens To order separately use AY-1-MR16-4 | WI  Wire Holder To order separately use AY-1-MR16-5 | FR  Frosted Lens To order separately use AY-1-MR16-6 |
|---|---|--|---|---|--|

COMPATIBLE POWER SUPPLIES

See power supplies cut sheets for more information. Data subject to change, all data has +/- 5% tolerance.

| DIMMING PROTOCOL | OUTDOOR |
|---------------------|--|
| | LANDSCAPE LIGHTING |
| Phase | Q-HEX Q-SET-1 Q-SET-2 Q-SET-3 QOMD QOMS |



9W LED MODULE

MR16 LED MODULE

3 YEAR
WARRANTY



9W LED Module

- Equivalent to MR16 75W Halogen (equivalent CBCP)
- 2700K, 3000K, or 4000K
- 10.8-13.2V AC/DC
- 12W startup draw
- Interchangeable lens: 15°, 30°, 45°, 60°
- Compatible with low-voltage magnetic transformers
- Field replaceable

LED MODULE SPECIFICATIONS

| WATTAGE | LENS | 2700K | 3000K | 4000K |
|---------|--------------------|------------|------------|------------|
| 9W | 15°, 30°, 45°, 60° | 810 Lumens | 835 Lumens | 855 Lumens |

LED LENS



15° Lens



30° Lens



45° Lens



60° Lens