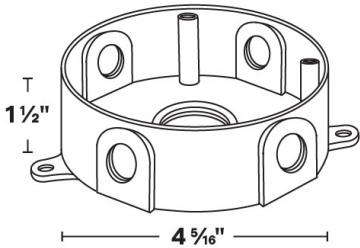
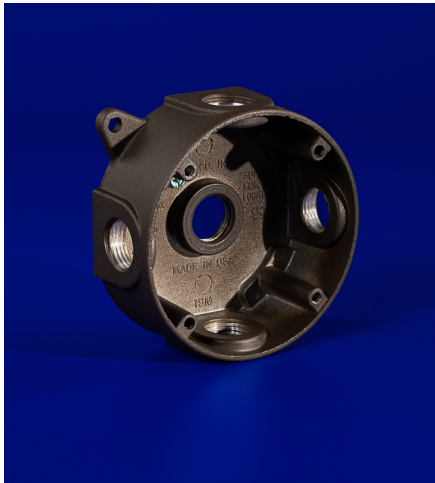




**MT-28**  
4/0 Round Cast Junction Box

**5** YEAR  
WARRANTY



- 6061 Marine Grade Aluminum round construction for junction mount installations.
- Five 1/2" NPS conduit entries, accepts industry standard luminaires.
- Tabs for mounting to surface.

MT-28 is shown in Bronze Texture Powder Coat Finish (BZT)      Dimensions: 4 5/16" X 1 1/2"

1	2
PRODUCT	FINISH
MT-28	

Sample Part Number: **MT-28-WT**

1	2
PRODUCT	FINISH
MT-28	<div><div>BG</div>Beige</div> <div><div>BB</div>Black Bronze</div> <div><div>BK</div>Black</div> <div><div>BKT</div>Black Texture</div> <div><div>BZ</div>Bronze</div> <div><div>BZT</div>Bronze Texture</div> <div><div>SL</div>Silver</div> <div><div>WH</div>White</div>

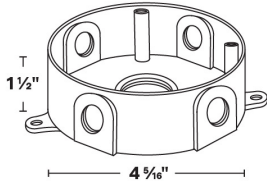
5 year warranty | Field modifications void warranty | Data subject to change, all data has +/- 5% tolerance



# MT-28

## 4/0 Round Cast Junction Box

### 1 PRODUCT - DIMENSIONS



### 2 FINISH

Eight Standard TGIC Free powder coat finishes

