

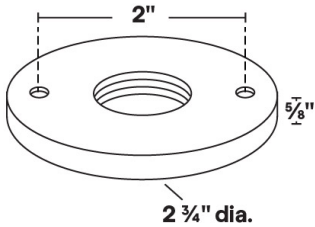
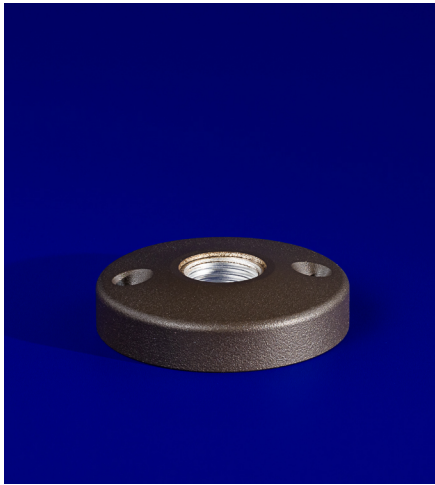


MT-20

Surface Mount Canopy

5 YEAR

WARRANTY



- 6061 Marine Grade Aluminum construction.
- Mounting hardware not supplied
- 1/2" NPS mount thread accepts industry standard luminaires.
- Two 3/16" screw mount holes.
- Surface mount canopy with threaded mount hole. Utilized for surface mount installations.

MT-20 Shown in Bronze Texture Powder Coat Finish (BZT)

Dimensions: 2 3/4" dia. x 5/8"

1	2	3
PRODUCT	MATERIAL	FINISH
MT-20	A	

Sample Part Number: MT-20-A-WT

1	2	3
PRODUCT	MATERIAL	FINISH
MT-20	A Aluminum	<div><div>BG</div>Beige</div> <div><div>BB</div>Black Bronze</div> <div><div>BK</div>Black</div> <div><div>BKT</div>Black Texture</div> <div><div>BZ</div>Bronze</div> <div><div>BZT</div>Bronze Texture</div> <div><div>SL</div>Silver</div> <div><div>WH</div>White</div>

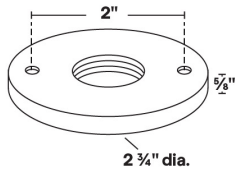
5 year warranty | Field modifications void warranty | Data subject to change, all data has +/- 5% tolerance



MT-20

Surface Mount Canopy

1 PRODUCT - DIMENSIONS

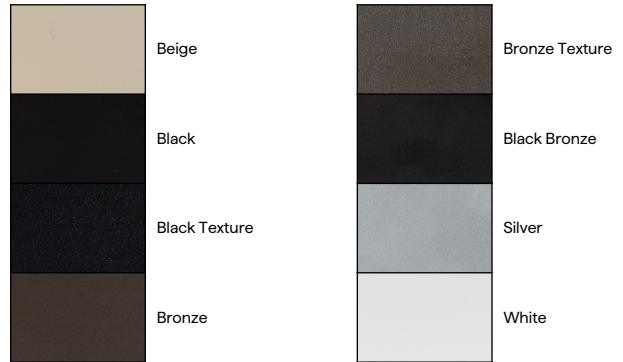


2 MATERIAL



3 FINISH

Eight Standard TGIC Free powder coat finishes



ACCESSORIES

1/2" NPS threaded hole; Accessories options must be order separately

AY-8



Knurled Jam Nut