



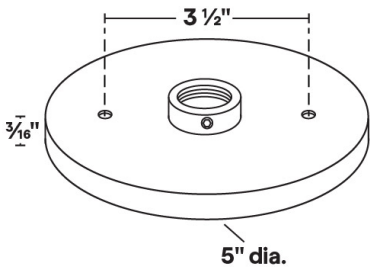
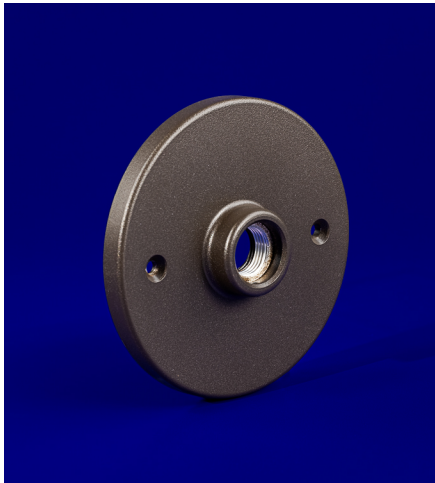
MT-42

4/0 Junction Box Cover - Locking

5

YEAR

WARRANTY



- 6061 Marine Grade Aluminum construction.
- 1/2" NPS mount threads, accepts industry standard luminaires.
- 10-32 set screw provides positive locking.
- 4/0 junction box cover with locking feature. Utilized for junction mount installations.

MT-42 Shown in Bronze Texture Powder Coat Finish (BZT)

Dimensions: 5" dia. x 3/16"

1	2	3
PRODUCT	MATERIAL	FINISH
MT-42	A	

Sample Part Number: MT-42-A-BK

1	2	3
PRODUCT	MATERIAL	FINISH
MT-42	A Aluminum	<div><div>BG</div>Beige</div> <div><div>BB</div>Black Bronze</div> <div><div>BK</div>Black</div> <div><div>BKT</div>Black Texture</div> <div><div>BZ</div>Bronze</div> <div><div>BZT</div>Bronze Texture</div> <div><div>SL</div>Silver</div> <div><div>WH</div>White</div>

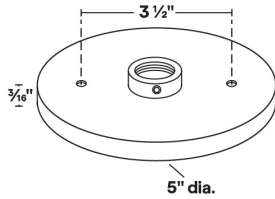
5 year warranty | Field modifications void warranty | Data subject to change, all data has +/- 5% tolerance



## MT-42

4/0 Junction Box Cover - Locking

### 1 PRODUCT - DIMENSIONS



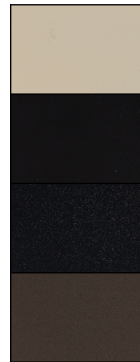
### 2 MATERIAL



Aluminum

### 3 FINISH

Eight Standard TGIC Free powder coat finishes



Beige

Black

Black Texture

Bronze



Bronze Texture

Black Bronze

Silver

White