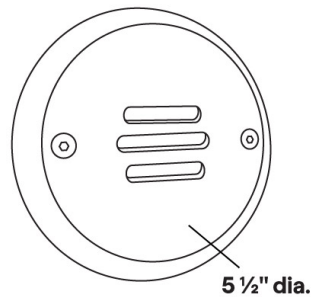




ST-10

12V MR16 20W Halogen/8W LED Box Mount
Step Light



- 6061 Marine Grade Aluminum, available in eight standard TGIC Free powder coat finishes.
- Stainless steel hardware.
- Tempered crystalline spread lens.
- 4/0 Double-deep junction box.
- High-temperature silicone O-ring seal used to seal the cap against the body.
- Molded silicone wire pass-thru attached to socket wire prevents wicking and water leaking into the lamp compartment.
- Maximum Wattage: 20W Halogen/8W LED
- Input Voltage: 12V (remote transformer required)
- Socket: GU5.3 Bi Pin Porcelain
- Wet Listed
- Specification-grade, wet-location landscape luminaire for wall mounted fixed downlighting and uplighting applications.

ST-10 Shown in Bronze Texture Powder Coat Finish (BZT) Dimensions: 5 1/2" dia. faceplate; x 3 1/4" length

1	2	3
PRODUCT	MATERIAL	FINISH
ST-10	A	

Sample Part Number: **ST-10-A-BK**

1	2	3
PRODUCT	MATERIAL	FINISH
ST-10	A Aluminum	<div><div>BG</div>Beige</div> <div><div>BB</div>Black Bronze</div> <div><div>BK</div>Black</div> <div><div>BKT</div>Black Texture</div> <div><div>BZ</div>Bronze</div> <div><div>BZT</div>Bronze Texture</div> <div><div>SL</div>Silver</div> <div><div>WH</div>White</div>

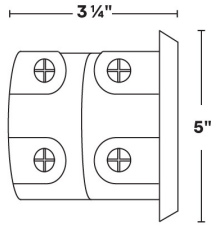
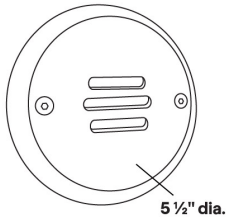
5 year warranty | Warranty only valid with QTL power supplies | Field modifications void warranty | Data subject to change, all data has +/- 5% tolerance



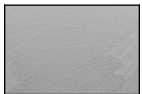
ST-10

12V MR16 20W Halogen/8W LED Box Mount Step Light

1 PRODUCT - DIMENSIONS



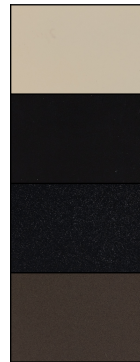
2 MATERIAL



Aluminum

3 FINISH

Eight Standard TGIC Free powder coat finishes available



Beige

Black

Black Texture

Bronze



Bronze Texture

Black Bronze

Silver

White

LAMPS

MR16 Halogen or LED; GU5.3 Bi-Pin Porcelain
Maximum wattage: 20W Halogen/8W LED

MR16



EMERY ALLEN
1.0W, 3.0W, 5.0W,
7.0W

MR16



EMERY ALLEN
3W AMBER



ST-10

12V MR16 20W Halogen/8W LED Box Mount Step Light

COMPATIBLE POWER SUPPLIES

See power supplies cut sheets for more information. Data subject to change, all data has +/- 5% tolerance.

DIMMING PROTOCOL	OUTDOOR
	LANDSCAPE LIGHTING
Phase	Q-HEX Q-SET-1 Q-SET-2 Q-SET-3 QOMD QOMS