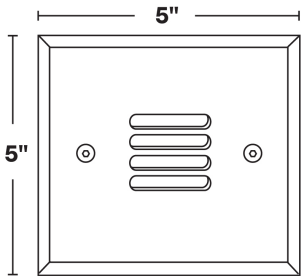




ST-9

12V MR16 20W Halogen/8W LED Box Mount Step Light



- 6061 Marine Grade Aluminum, available in eight standard TGIC Free powder coat finishes.
- Stainless steel hardware.
- Tempered crystalline spread lens.
- 4/0 Double-deep junction box.
- High-temperature silicone O-ring seal used to seal the cap against the body.
- Molded silicone wire pass-thru attached to socket wire prevents wicking and water leaking into the lamp compartment.
- Maximum Wattage: 20W Halogen/8W LED
- Input Voltage: 12V (remote transformer required)
- Lens: Tempered Crystalline Spread
- Socket: GU5.3 Bi Pin Porcelain
- Wet Listed
- Specification-grade, wet-location landscape luminaire for wall mounted fixed downlighting and uplighting applications.

ST-9 Shown in Bronze Texture Powder Coat Finish (BZT)

Dimensions: 5" x 5" faceplate; 3 1/4" length

1	2	3
PRODUCT	MATERIAL	FINISH
ST-9	A	

Sample Part Number: ST-9-A-BK

1	2	3
PRODUCT	MATERIAL	FINISH
ST-9	A Aluminum	<div><div>BG</div>Beige</div> <div><div>BB</div>Black Bronze</div> <div><div>BK</div>Black</div> <div><div>BKT</div>Black Texture</div> <div><div>BZ</div>Bronze</div> <div><div>BZT</div>Bronze Texture</div> <div><div>SL</div>Silver</div> <div><div>WH</div>White</div>

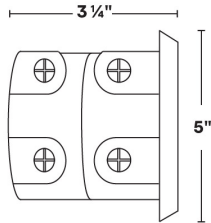
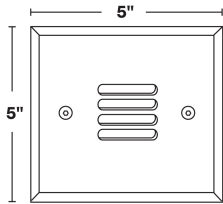
5 year warranty | Warranty only valid with QTL power supplies | Field modifications void warranty | Data subject to change, all data has +/- 5% tolerance



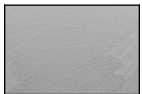
## ST-9

12V MR16 20W Halogen/8W LED Box Mount Step Light

### 1 PRODUCT - DIMENSIONS



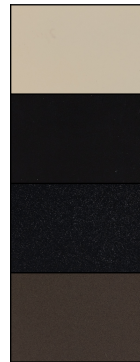
### 2 MATERIAL



Aluminum

### 3 FINISH

Eight Standard TGIC Free powder coat finishes available



Beige

Black

Black Texture

Bronze



Bronze Texture

Black Bronze

Silver

White

### LAMPS

MR16 Halogen or LED; GU5.3 Bi-Pin Porcelain  
Maximum wattage: 20W Halogen/8W LED

MR16



EMERY ALLEN  
1.0W, 3.0W, 5.0W,  
7.0W

MR16



EMERY ALLEN  
3W AMBER



**ST-9**

12V MR16 20W Halogen/8W LED Box Mount Step Light

**COMPATIBLE POWER SUPPLIES**

See power supplies cut sheets for more information. Data subject to change, all data has +/- 5% tolerance.

DIMMING PROTOCOL	OUTDOOR
	LANDSCAPE LIGHTING
Phase	Q-HEX Q-SET-1 Q-SET-2 Q-SET-3 QOMD QOMS