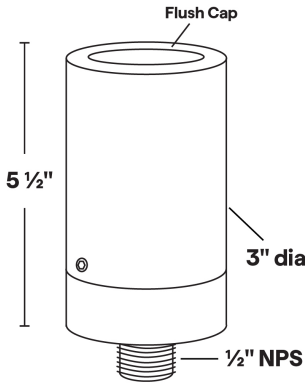




UL-28

120VAC PAR20 35W Halogen/11W LED Up Light



- Flush lens cap; holds up to two accessories
- 6061 Marine Grade Aluminum components are anodized, then a polyester powder coat finish is applied.
- Stainless steel hardware.
- 10" of 18ga. Teflon coated wire leads.
- Tempered clear glass lens.
- High-temperature silicone O-ring seal used to seal the cap against the body.
- Maximum Wattage: 35W Halogen/11W LED
- Input Voltage: 120VAC
- Socket: Medium base ceramic
- Wet Listed
- Specification-grade, wet-location landscape luminaire for fixed uplighting applications. Can be utilized for ground mounted or surface mounted installations.

UL-28 Shown in Bronze Texture Powder Coat Finish (BZT)

Dimensions: 3" dia. x 5 1/2"

1	2	3
PRODUCT	MATERIAL	FINISH
UL-28	A	

Sample Part Number: UL-28-A-BK

1	2	3
PRODUCT	MATERIAL	FINISH
UL-28	A Aluminum	<div><div>BG</div>Beige</div> <div><div>BB</div>Black Bronze</div> <div><div>BK</div>Black</div> <div><div>BKT</div>Black Texture</div> <div><div>BZ</div>Bronze</div> <div><div>BZT</div>Bronze Texture</div> <div><div>SL</div>Silver</div> <div><div>WH</div>White</div>

5 year warranty | Warranty only valid with QTL power supplies | Field modifications void warranty | Data subject to change, all data has +/- 5% tolerance

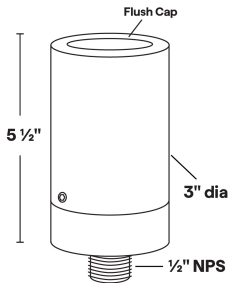


UL-28

120VAC PAR20 35W Halogen/11W LED Up Light

1

PRODUCT - DIMENSIONS



2

MATERIAL

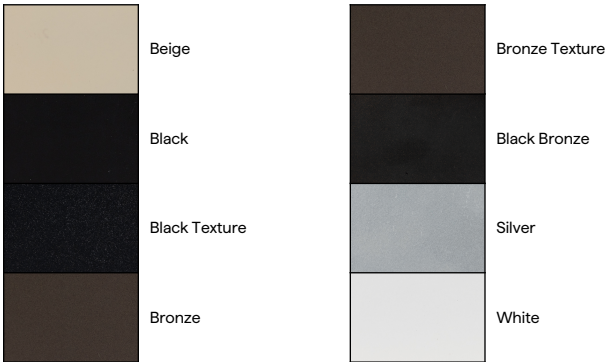


Aluminum

3

FINISH

Eight Standard TGIC Free powder coat finishes available



ACCESSORIES - LENS

Holds up to two accessories

SP	LI	SO	LV	WI	FR
Spread Lens	Linear Lens	Softening Lens	Louver Lens	Wire Holder	Frosted Lens
To order separately use AY-1-PAR20-1	To order separately use AY-1-PAR20-2	To order separately use AY-1-PAR20-3	To order separately use AY-1-PAR20-4	To order separately use AY-1-PAR20-5	To order separately use AY-1-PAR20-6



## UL-28

120VAC PAR20 35W Halogen/11W LED Up Light

### ACCESSORIES - MOUNTING

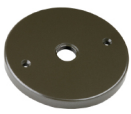
1/2" NPS; Mount options must be ordered separately

MT-44



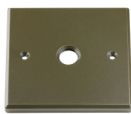
4/0 Machined  
Junction Box/Cover

MT-25



Round 4/0 Junction  
Box Cover

MT-26



Square 4/0 Junction  
Box Cover

MT-27



Round 3/0 Junction  
Box Cover

### LAMPS

PAR20 Halogen or LED; Medium base ceramic  
Maximum wattage: 35W Halogen/11W LED

PAR20



SORAA VIVID  
11.0W

PAR20



SORAA BRILLIANT  
8.5W, 11.0W