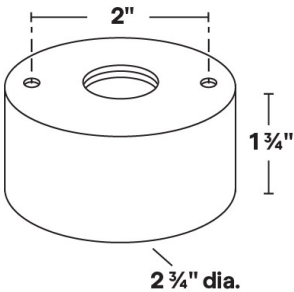
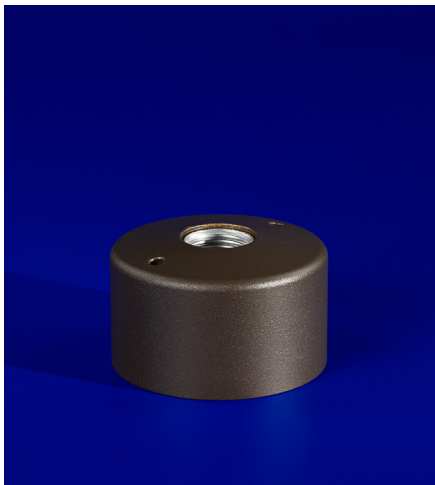




MT-17
Surface Mount Canopy



- 6061 Marine Grade Aluminum construction.
- Mounting hardware not supplied
- 1/2" NPS mount thread accept industry standard luminaires.
- Has two 3/16" screw mount holes.
- Surface mount canopy with threaded mount hole. Utilized for surface mount installations.

MT-17 Shown in Bronze Texture Powder Coat Finish (BZT)

Dimensions: 2 3/4" dia. x 1 3/4"

1	2	3
PRODUCT	MATERIAL	FINISH
MT-17	A	

Sample Part Number: MT-17-A-BZ

1	2	3
PRODUCT	MATERIAL	FINISH
MT-17	A Aluminum	<div><div>BG</div>Beige</div> <div><div>BB</div>Black Bronze</div> <div><div>BK</div>Black</div> <div><div>BKT</div>Black Texture</div> <div><div>BZ</div>Bronze</div> <div><div>BZT</div>Bronze Texture</div> <div><div>SL</div>Silver</div> <div><div>WH</div>White</div>

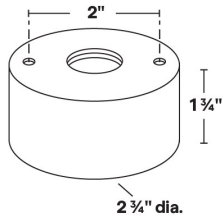
5 year warranty | Field modifications void warranty | Data subject to change, all data has +/- 5% tolerance



MT-17

Surface Mount Canopy

1 PRODUCT - DIMENSIONS

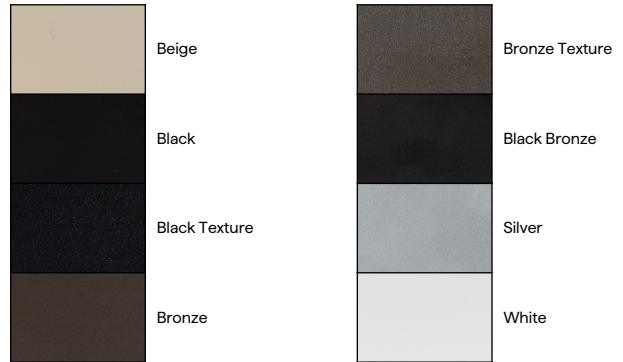


2 MATERIAL



3 FINISH

Eight Standard TGIC Free powder coat finishes



ACCESSORIES

1/2" NPS threaded hole; Accessories options must be order separately

AY-8



Knurled Jam Nut