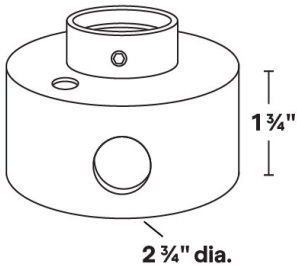
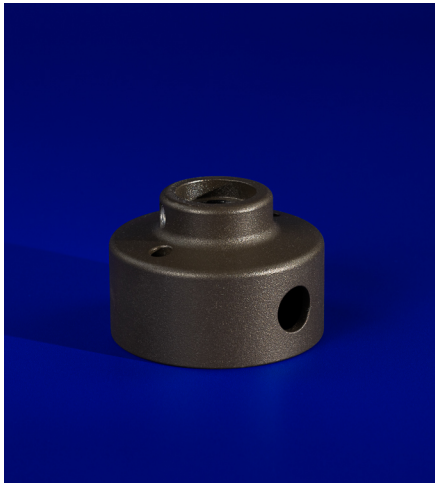




# MT-39

Locking Tree Mount Canopy w/Hanger Bolts



- Tree mount with hanger bolts.
- Locking set screw for rotational aiming.
- 6061 Marine Grade Aluminum construction.
- 1/2" NPS mount threads accept industry standard luminaires.
- Mounting hardware not supplied
- 5/8" wiring hole.
- Two 1/4" mounting holes.
- 1/4-20 Stainless steel hanger bolts and nuts included (one set).
- Optional 1/4-20 driver bit available.
- Aluminum tree mount canopy with stainless steel hanger bolts

MT-39 Shown in Bronze Texture Powder Coat Finish (BZT)

Dimensions: 2 3/4" dia. x 1 3/4"

1	2	3	4	5
PRODUCT	MATERIAL	HANGER BOLTS	DRIVER	FINISH
MT-39	A			

Sample Part Number: MT-39-A-4-D-BZ

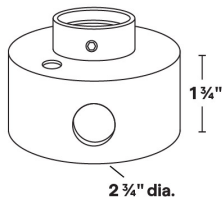
1	2	3	4	5
PRODUCT	MATERIAL	HANGER BOLTS	DRIVER	FINISH
MT-39	A Aluminum	0 None 4 4" Set 5 5" Set	N No Driver D 1/4 - 20 with 20 Driver Bit	BG Beige BB Black Bronze BK Black BKT Black Texture BZ Bronze BZT Bronze Texture SL Silver WH White



# MT-39

Locking Tree Mount Canopy w/Hanger Bolts

## 1 PRODUCT - DIMENSIONS



## 2 MATERIAL



## 5 FINISH

Eight Standard TGIC Free powder coat finishes

