



## Q-SET-2

12V or 24V AC Power Supply -  
360W-600W



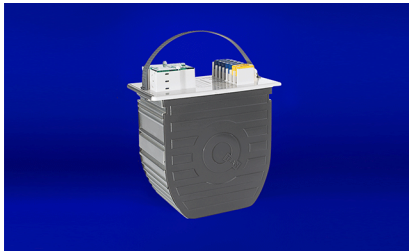
BUY AMERICAN  
ACT COMPLIANT



BUILD AMERICA  
BUY AMERICA  
COMPLIANT



MADE IN AMERICA  
FROM DOMESTIC &  
FOREIGN PARTS



- Designed for use with the Q-Vault-5 IP68 direct burial power supply enclosure
- Available in 12VAC or 24VAC options
- Wattage options range from 480W to 600W
- Equipped with two secondary circuit breakers
- Holds three UL listings: Landscape Lighting, Pool & Spa, and Low-Voltage Luminaire Power Supply
- Suitable for both interior and exterior lighting applications
- Provides five secondary taps to compensate for voltage drop
- Allows for connecting loads to one or more secondary taps of the Q-SET.
- Must be purchased with Q-VAULT-5

1 PRODUCT	2 WATTAGE	3 PRIMARY VOLTAGE	4 SECONDARY VOLTAGE
Q-SET			

Sample Part Number: **Q-SET-360-120(60Hz)-12V**

1 PRODUCT	2 WATTAGE	3 PRIMARY VOLTAGE	4 SECONDARY VOLTAGE
Q-SET	360W 480W 600W	120 60Hz 220 60Hz 230 50Hz 240 60Hz 277 60Hz	12V 24V

## PRODUCT INFORMATION

- For supply connections use wire rated for at least 90°C
- Suitable for inground installation
- Use dimmers rated for magnetic low voltage load
- Not for installation to conduit extending directly to an underwater pool light forming shell
- Suitable for use with submersible luminaries
- Suitable for indoor & outdoor use
- WARNING: Risk of fire - if installation involves running wiring through a building structure, special wiring methods are needed. Consult a qualified electrician.
- CSA #239924
- Low Voltage Lighting Systems
  - CSA Class 3426-04 and Class 3426-94
  - CSA Standard C22.2 No. 250.0-08 - Luminaires :ANSI/ UL Standard 2108 - Low Voltage Lighting System
- Landscape Lighting Systems
  - CSA Class 3425-15 and Class 3425-95 :
  - CSA Standard C22.2 No. 250.7-07 - Extra-Low-Voltage Landscape Lighting Systems
  - ANSI/ UL Standard 1838 - Low Voltage Landscape Lighting Systems
- Component Hydromassage - 120V primary, 12V secondary
  - CSA Class 3425-96
  - ANSI/ UL Standard 379-Power Units for Fountain, Swimming Pool, and Spa Luminaires
- 10 Year Warranty



## Q-SET-2

12V or 24V AC Power Supply - 360W–600W

### VOLTAGE DROP CHART

#### Secondary tap connection

##### No Dimming - use primary tap #2

Load Wattage (W)	12V - TAP 2 (START)					
	8 AWG	10AWG	12AWG	14AWG	16AWG	18AWG
120	72	45	28	18	11	7
240	36	23	14	9	6	4
360	24	15	9	6	4	2
480	18	11	7	4	3	2
600	14	9	6	4	2	1

Load Wattage (W)	13V - TAP 3 (+)					
	8 AWG	10AWG	12AWG	14AWG	16AWG	18AWG
120	151	95	60	38	24	15
240	76	48	30	19	12	7
360	50	32	20	13	8	5
480	38	24	15	9	6	4
600	30	19	12	8	5	3

Load Wattage (W)	14V - TAP 4 (++)					
	8 AWG	10AWG	12AWG	14AWG	16AWG	18AWG
120	231	145	91	57	36	23
240	115	73	46	29	18	11
360	77	48	30	19	12	8
480	58	36	23	14	9	6
600	46	29	18	11	7	5

Load Wattage (W)	15V - TAP 5 (+++)					
	8 AWG	10AWG	12AWG	14AWG	16AWG	18AWG
120	310	195	123	77	49	31
240	155	98	61	39	24	15
360	103	65	41	26	16	10
480	78	49	31	19	12	8
600	62	39	25	15	10	6

Load Wattage (W)	24V - TAP 2 (START)					
	8 AWG	10AWG	12AWG	14AWG	16AWG	18AWG
120	287	180	113	71	45	28
240	143	90	57	36	22	14
360	96	60	38	24	15	9
480	72	45	28	18	11	7
600	57	36	23	14	9	6

Load Wattage (W)	26V - TAP 3 (+)					
	8 AWG	10AWG	12AWG	14AWG	16AWG	18AWG
120	605	380	239	150	95	60
240	302	190	120	75	47	30
360	202	127	80	50	32	20
480	151	95	60	38	24	15
600	121	76	48	30	19	12

Load Wattage (W)	28V - TAP 4 (++)					
	8 AWG	10AWG	12AWG	14AWG	16AWG	18AWG
120	923	580	365	230	144	91
240	462	290	183	115	72	45
360	308	193	122	77	48	30
480	231	145	91	57	36	23
600	185	116	73	46	29	18

Load Wattage (W)	30V - TAP 5 (+++)					
	8 AWG	10AWG	12AWG	14AWG	16AWG	18AWG
120	1242	780	491	309	194	122
240	621	390	246	154	97	61
360	414	260	164	103	65	41
480	310	195	123	77	49	31
600	248	156	98	62	39	24

##### With Dimming - use primary tap #3

Load Wattage (W)	12V - TAP 2 (START)					
	8 AWG	10AWG	12AWG	14AWG	16AWG	18AWG
120	TAP 2 NOT RECOMMENDED FOR USE WITH DIMMER					
240						
360						
480						
600						

Load Wattage (W)	13V - TAP 3 (+)					
	8 AWG	10AWG	12AWG	14AWG	16AWG	18AWG
120	72	45	28	18	11	7
240	36	23	14	9	6	4
360	24	15	9	6	4	2
480	18	11	7	4	3	2
600	14	9	6	4	2	1

Load Wattage (W)	14V - TAP 4 (++)					
	8 AWG	10AWG	12AWG	14AWG	16AWG	18AWG
120	151	95	60	38	24	15
240	76	48	30	19	12	7
360	50	32	20	13	8	5
480	38	24	15	9	6	4
600	30	19	12	8	5	3

Load Wattage (W)	15V - TAP 5 (+++)					
	8 AWG	10AWG	12AWG	14AWG	16AWG	18AWG
120	231	145	91	57	36	23
240	115	73	46	29	18	11
360	77	48	30	19	12	8
480	58	36	23	14	9	6
600	46	29	18	11	7	5

Load Wattage (W)	24V - TAP 2 (START)					
	8 AWG	10AWG	12AWG	14AWG	16AWG	18AWG
120	TAP 2 NOT RECOMMENDED FOR USE WITH DIMMER					
240						
360						
480						
600						

Load Wattage (W)	26V - TAP 3 (+)					
	8 AWG	10AWG	12AWG	14AWG	16AWG	18AWG
120	287	180	113	71	45	28
240	143	90	57	36	22	14
360	96	60	38	24	15	9
480	72	45	28	18	11	7
600	57	36	23	14	9	6

Load Wattage (W)	28V - TAP 4 (++)					
	8 AWG	10AWG	12AWG	14AWG	16AWG	18AWG
120	605	380	239	150	95	60
240	302	190	120	75	47	30
360	202	127	80	50	32	20
480	151	95	60	38	24	15
600	121	76	48	30	19	12

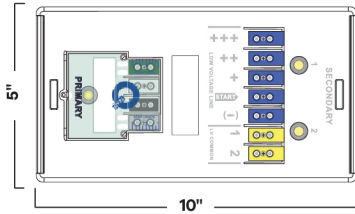
Load Wattage (W)	30V - TAP 5 (+++)					
	8 AWG	10AWG	12AWG	14AWG	16AWG	18AWG
120	923	580	365	230	144	91
240	462	290	183	115	72	45
360	308	193	122	77	48	30
480	231	145	91	57	36	23
600	185	116	73	46	29	18



## Q-SET-2

12V or 24V AC Power Supply - 360W–600W

### 1 PRODUCT - DIMENSIONS



### 2 TECHNICAL INFORMATION

Volt Rating	Secondary Circuit Breaker Size	Total Circuit Breaker Load	Number of Circuit Breaker	Total Q-SET Load
12V	15 A	180W	2	360W
12V	20 A	240W	2	480W
12V	25 A	300W	2	600W
24V	7.5 A	180W	2	360W
24V	10 A	240W	2	480W
24V	12.5 A	300W	2	600W

### MULTI-VOLT & TAPS






- Two (2) primary taps, a switch or a dimmed tap to compensate for losses when dimming
- Five (5) secondary taps provide nominal secondary voltages of:
  - 12V = 11V, 12V, 13V, 14V, & 15V
  - 24V = 22V, 24V, 26V, 28V, & 30V
- Loads may be connected to one or more of the secondary taps of the PSC.
- No derating required for incandescent and halogen loads
- 50% derating require for LED retrofit loads
- The advantage is that loads at varying distances from the PSC can be tapped on different taps to recover voltage drop, allowing you to get the correct voltage at your load and produce between 85%-100% light output. (See QTL Voltage drop Calculator)
- Primary Circuit Protection: All 120V units come with both a primary and secondary, hydraulic, magnetic circuit breaker. All have a primary auto-reset thermal protector, which is built into the transformer. This thermal protector will temporarily disconnect the primary if the transformer overheats due to an overload or saturation from a faulty dimmer.
- Secondary Circuit Protection: 2 secondary breakers



**Q-SET-2**

12V or 24V AC Power Supply - 360W–600W

COMPATIBLE DIRECT BURIAL PRODUCTS

<b>Q-VAULT</b>	<b>Q-CLIK</b>	<b>Q-WIRE</b>	<b>Q-TWO</b>	<b>QW-STRIPPER</b>
				
IP68 wet listed direct burial enclosure for one Q-SET-2	Watertight fitting for entryway in and out of QTL housing	Highly efficient, long-lasting wire	Underground low voltage UF splice kit	UF cable outer jacket strip tool